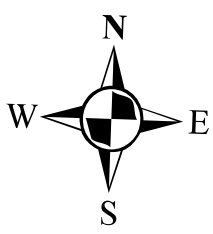
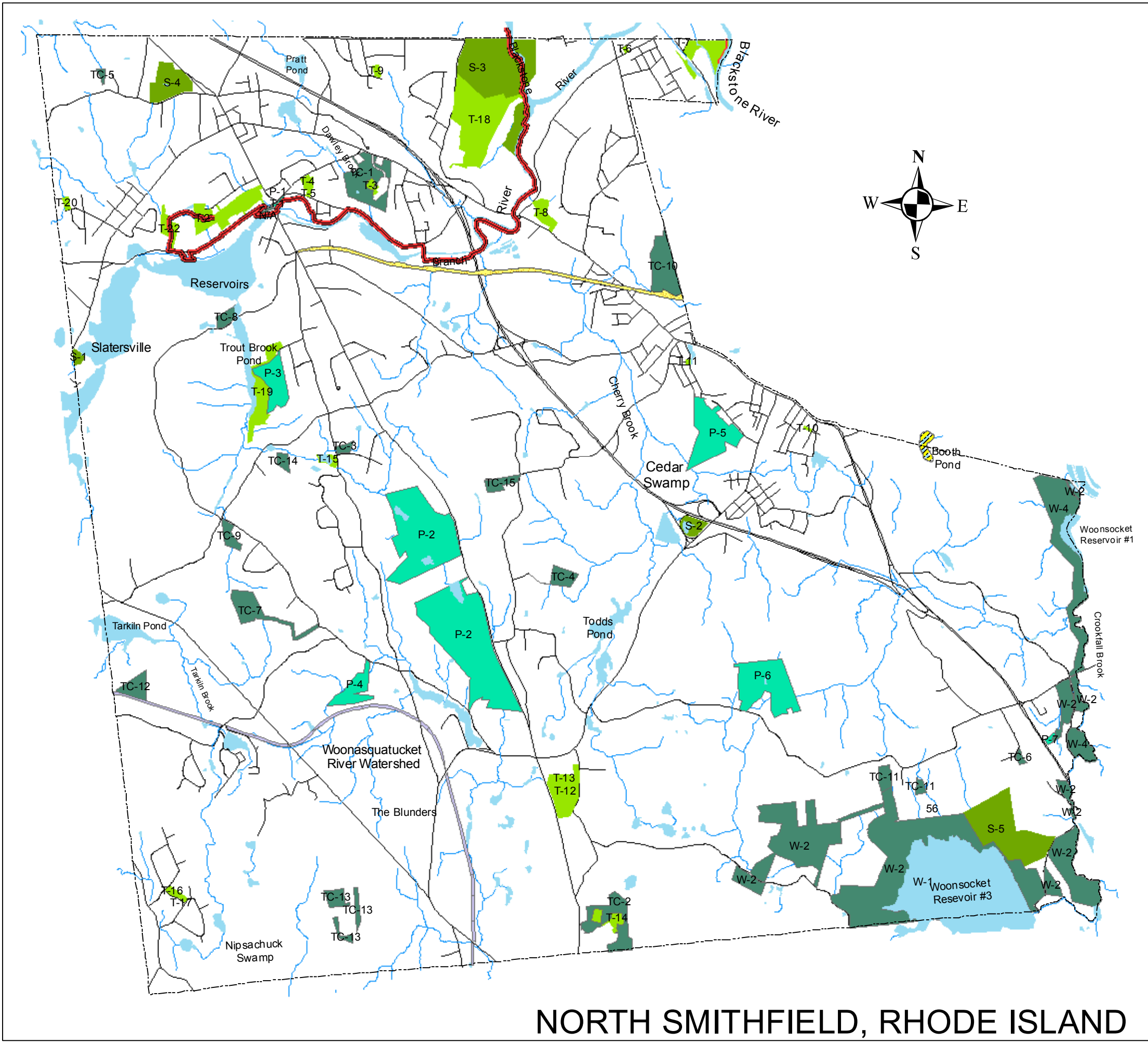


# MAP I-1 OPEN SPACE AND RECREATION PLAN



## Legend

- Conservation & Passive Recreational Areas
- Private Open Space & Recreational Areas
- Town Open Space & Recreational Areas
- State Open Space & Recreational Areas
- Proposed Future Conservation
- Branch River Bike Path
- Northwest Bicycle Project
- Branch River Greenway
- Blackstone Greenway
- Lakes & Ponds
- Streams
- Roads
- Town Boundary



1 inch equals 3,042 feet



This map was prepared for the inventory of real property within the Town of North Smithfield. Users of this tax map are hereby notified that the public primary information sources, including record deeds and plats, should be consulted for the verification of the information contained on this map. The Town of North Smithfield and its mapping contractors assume no legal responsibility for the information contained herein.

Base-map and hydrographic features were provided by Rhode Island GIS as 1"=400' features derived from the 1997 National Grid USA/RIDOT Orthophoto Project.

Updated: September, 2003



# NORTH SMITHFIELD, RHODE ISLAND